

11/25/16 1330Z

ALCON

Missions for Operation Deep Freeze 2016 (WINFLY Phase). All missions will be available for flying and tasking as of 25 Nov 2016.

Make sure you download all scenery currently located on the ODF website.

All flights must utilize the approved version of the ACMI gauge. When your mission is complete release your plane and file your mission report on the ODF website.

Do not forget to file a MISREP as per directives. Include any and all pictures of your mission to verify your success of the mission.

MISSION ASSIGNMENT PROCEDURES:

1. Pilot chooses specific mission from forum listing and post thread on the forums requesting the mission by ODF number and PRO number (Example: Request Mission ODF1111)
2. ODF Commander will assign the mission to the pilot by changing the mission color from white to blue with the assigned pilots name (Example: Assigned to: - Jones)
3. Upon completion of the mission, pilots will then "release their planes" at the appropriate locations (delivering the cargo) and file a MISREP.
4. Pilots are required to return to PHNL after delivering cargo. Pilots will select their airframe from the ACMI Interface and RTB to PHNL. Upon arrival at PHNL, pilots will release their plane and file a MISREP.

FILING MISREPS:

For every WINFLY mission a total of 3 MISREPS will be filed.

1. File automated ACMI MISREP with vusaf.us site when cargo is delivered. (Will include ACMI data file attachment)
2. File MISREP with the ODF Website when cargo is delivered and aircraft returns to PHNL. (Will include photo attachment of delivery area/marshaling area)
3. File automated ACMI MISREP with vusaf.us site when aircraft returns to PHIK. (Will include ACMI data file attachment)

NOTE: (If there are multiple legs, a vusaf.us MISREP is required each time the aircraft lands and must include the ACMI data file attachment)

CALLSIGNS:

All AMC Aircraft will use their Air Force specific call signs preceded by "RCH" while flying WINFLY assignments unless specified in the mission assignment. (Example: RCH3331)

Training mode is not authorized for any of these flights.

*Post requests for mission assignments in WINFLY mission thread. (WINFLY/MAINBODY)

*When your mission is complete post in the specific mission thread (WINFLY/MAINBODY).

Missions in WHITE are available.

Missions in BLUE are assigned.

Missions in RED are complete.

IMPORTANT: It is imperative that pilots strictly adhere to the above listed MISREP procedures. Failure to correctly file MISREPS will result in inaccurate hours rated and denial of flight credit.

OPERATION DEEP FREEZE COMMANDERS: vMGen Drew Ritz, vCol Dennis Stanek.

All questions and issues should go to your Commander.

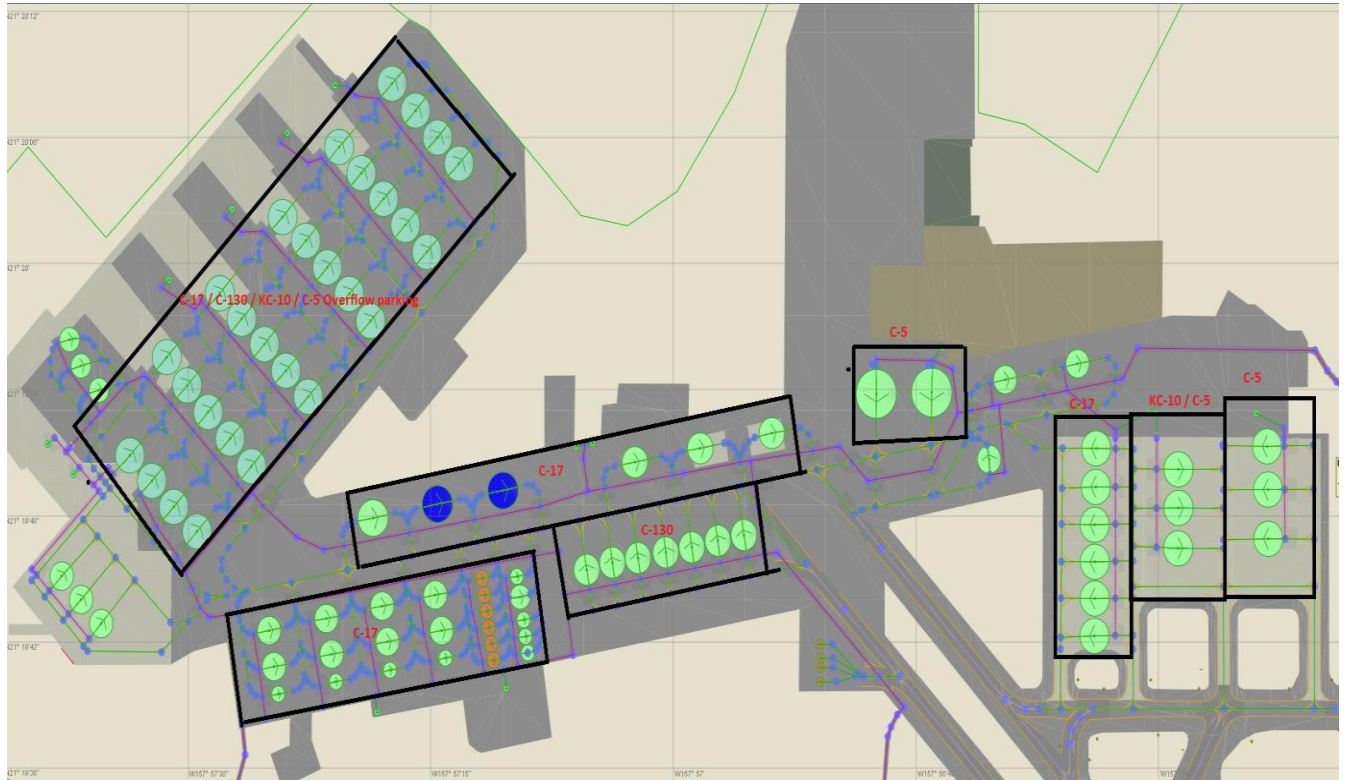
Only Wing CC or above can assign missions during this operation.

ALL AIRCRAFT MUST BE PROPERLY PARKED AND RELEASED AFTER EACH MISSION OR YOU WILL NOT RECEIVE POINTS FOR THAT MISSION.

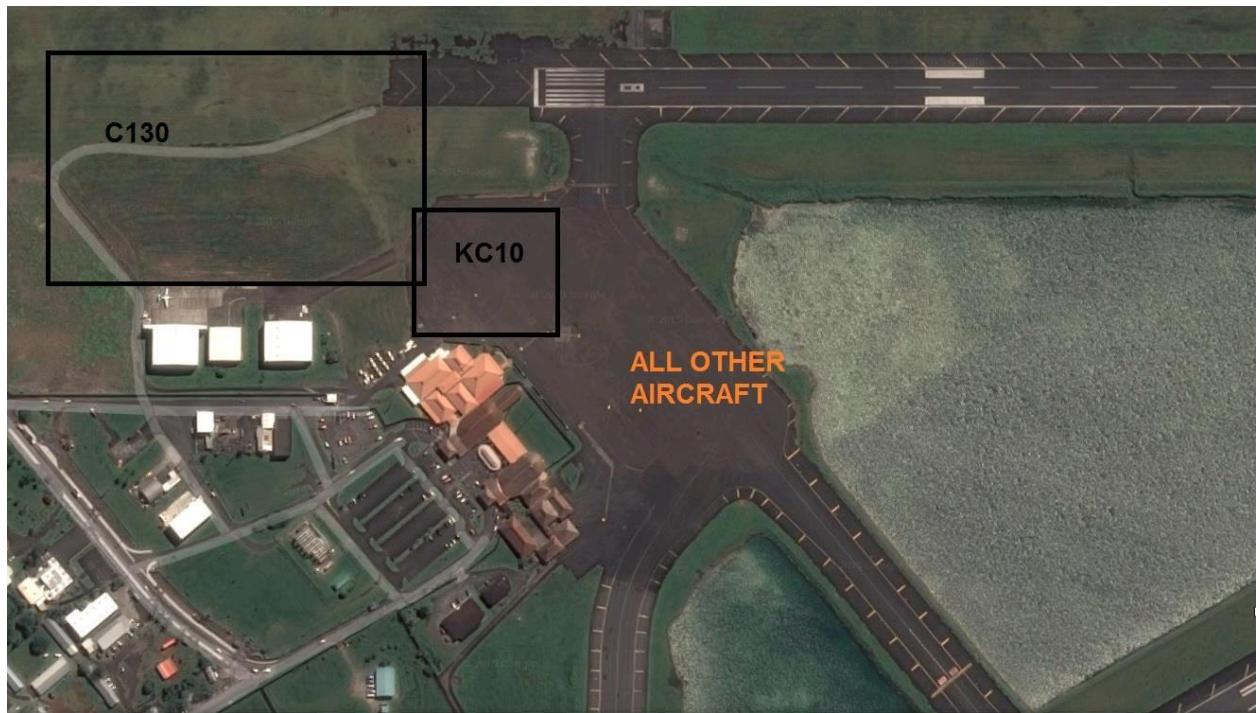
IF YOU CRASH YOUR PLANE YOU MUST REPAIR IT AND USE THAT PLANE FOR YOUR CURRENT MISSION ASSIGNMENT OR POINTS WILL NOT BE GIVEN.

DO NOT STEAL SOMEONE ELSE'S PAYLOAD AT PAGO PAGO. IF YOU CRASH DURING YOUR LEG FROM PAGO PAGO TO CHRISTCHURCH, YOU MUST START FROM HICKAM AFB. IF YOU STEAL SOMEONE ELSE'S PAYLOAD YOUR AIRCRAFT WILL BE POSITIONED AT YOUR HOME BASE AND YOU WILL BE REQUIRED TO FLY BACK TO THE OPERATION. THIS IS A COMMON OCCURANCE IN OPERATIONS PAST AND WILL BE STRICTLY ENFORCED.

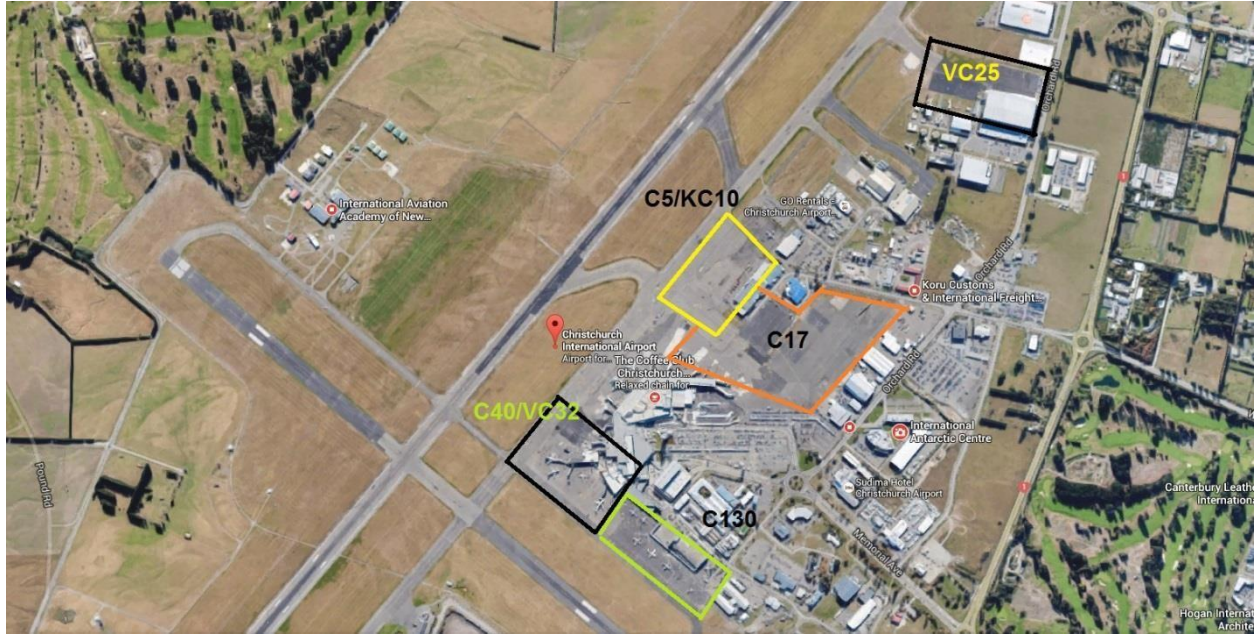
PARKING HICHAM AFB



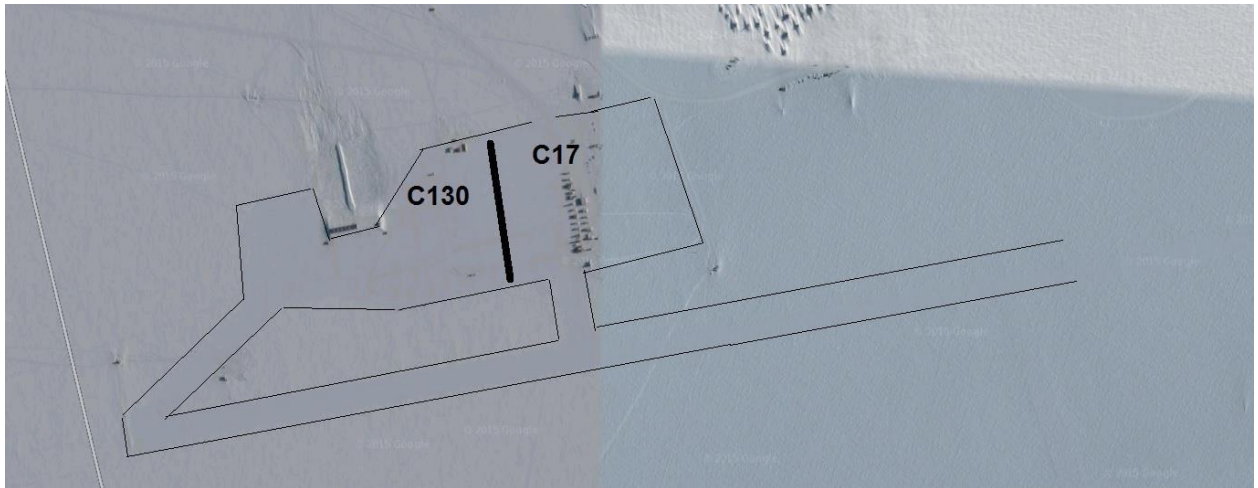
PAGO PAGO



CHRISTCHURCH



MCMURDO



PEGESUS

